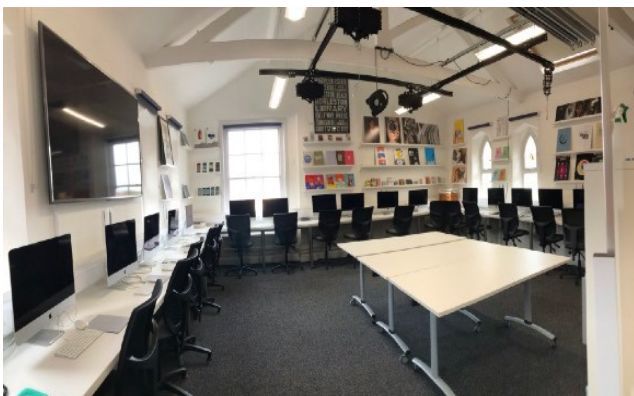




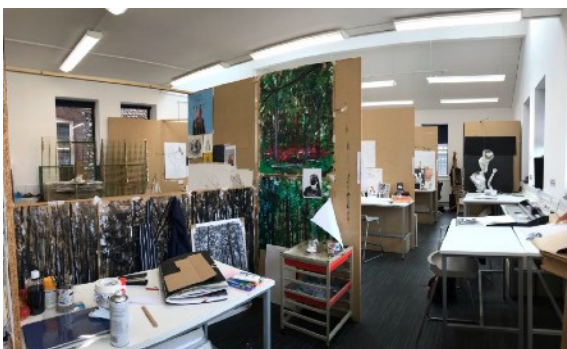
Art & Design

Pupils opt for one or more of the following from the A-Level WJEC Eduqas Art & Design (A&D) specification: A&D Photography, A&D Graphic Communication, A&D: Fine Art and A&D 3D Design. Essentially, we have three floors in Carter:

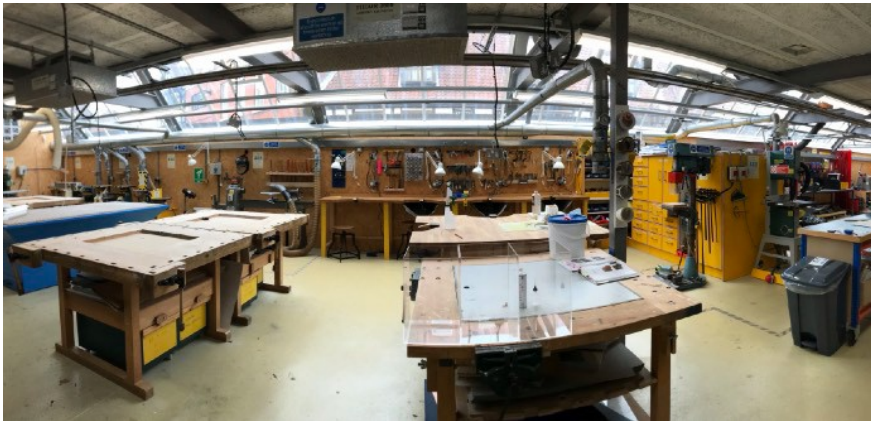
The second floor is for 2D Digital Design (photography and film, and/or Graphics/Animation as two separate A levels). There are three digital studios with Mac suites in each room with Adobe Creative Suite, a large format printer, studio cameras and film equipment, professional photographic backdrops and lighting rigs.



The first floor is for Fine Art (painting and drawing, printmaking, sculpture, video and installation). Fine Art pupils have their own studio space which they have access to at any time during the school day. S2 on the ground floor is a dedicated printmaking and life drawing studio. There is also a ceramics studio.



The ground floor is for 3D Design and Textiles (architecture, body adornment/fashion construction, product design, furniture and sculptural objects). There are two studios with Mac suits in each room. There is a textiles and construction studio. The workshop covers areas such as wood, metal, jewellery, casting and a welding bay.



The courses all have slightly different approaches, but creativity, diversity and innovation are at the heart of all we do. Pupils are introduced to a diverse range of media, resources and equipment to broaden their understanding and their ability to generate conceptual ideas and creative results. They benefit greatly from trips to galleries and museums in London, Venice, Barcelona, Amsterdam and New York. They also enjoy opportunities for life drawing classes, after school support and workshops, seminars, community projects, competitions and 'live' briefs. The studios have an 'open door policy' and so they are normally open from 4 - 6pm, Monday to Thursday for them to continue their studies.

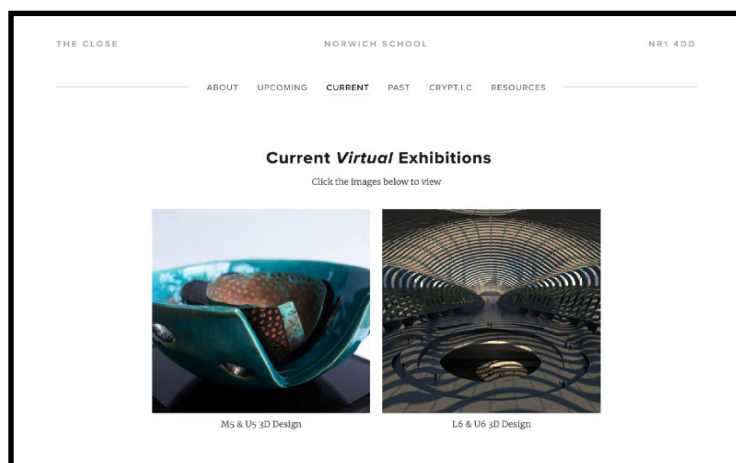
For an independent school we have perhaps the largest cohort of A level students in the country. On average we have on average 10-20 students go on to study Art and Design at the leading universities whilst the other 60% use their high grade to gain entry on courses outside the creative industries.

To visit the department Instagram account: https://www.instagram.com/norwichschool_art_and_design/

Further information about the A Level courses can be found at <https://www.edugas.co.uk/qualifications/art-and-design/as-a-level/>

Norwich School also has its own exhibition space, The Crypt Gallery, which is used to showcase work from within the Norwich School community, along with external exhibitions. For more information please visit www.cryptgallery.space. This also includes a link to our new virtual gallery and is currently showcasing work created in the 3D department.

The Crypt Gallery and new virtual gallery:

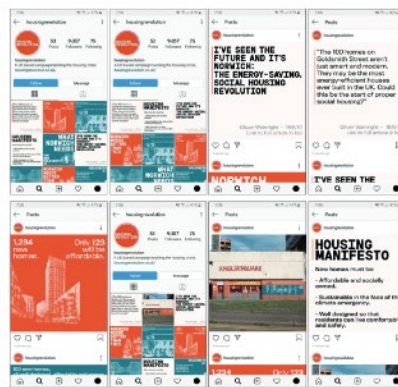


Pupil work from each of the disciplines:

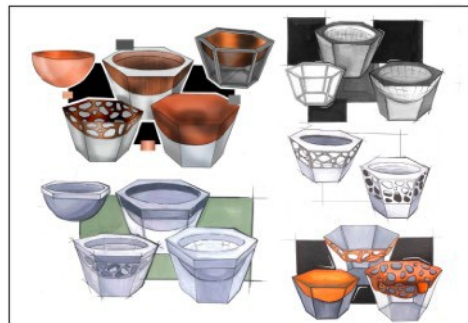
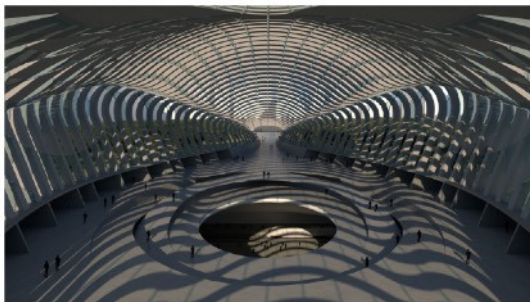
A&D Photography and Film Stills



A&D Graphic Communication/Animation



3D Design



Fine Art

